

# Corridor Considerations

## Examples Include:

- ✓ Connectivity to Transportation System
- ✓ Bluff on West Side of River
- ✓ River Flow
- ✓ Nutwood Levee
- ✓ Park Limits
- ✓ Wetlands
- ✓ Historic Properties
- ✓ Access to Public Services
- ✓ Transmission Lines

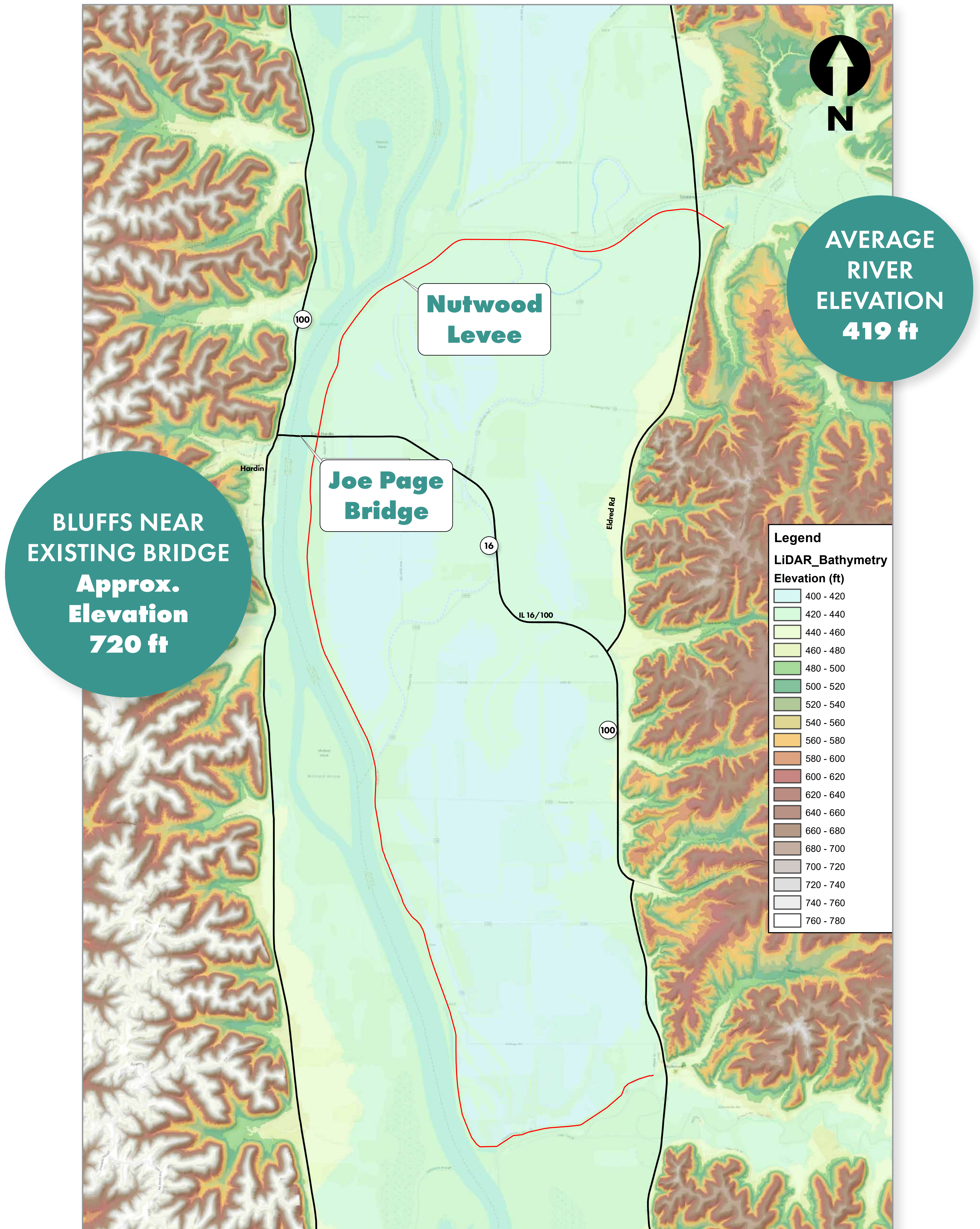
Top of bluffs near existing bridge, approximate elevation 720 feet

Elevation 492 feet, approximate bottom of a new bridge built to current Design Standards

Average River Elevation 419 feet





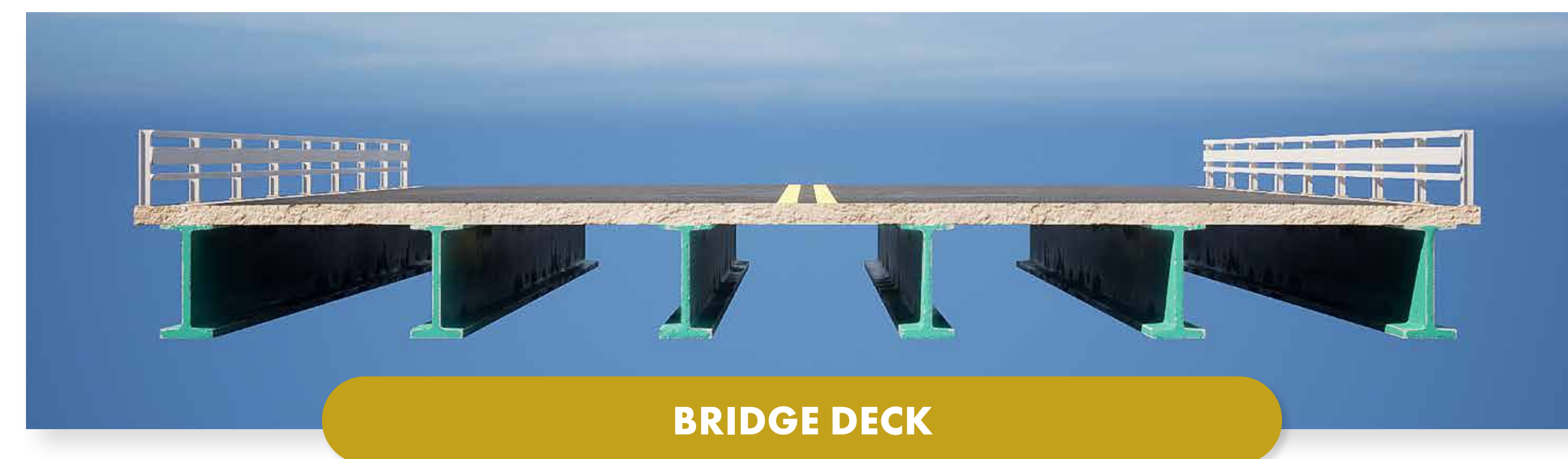
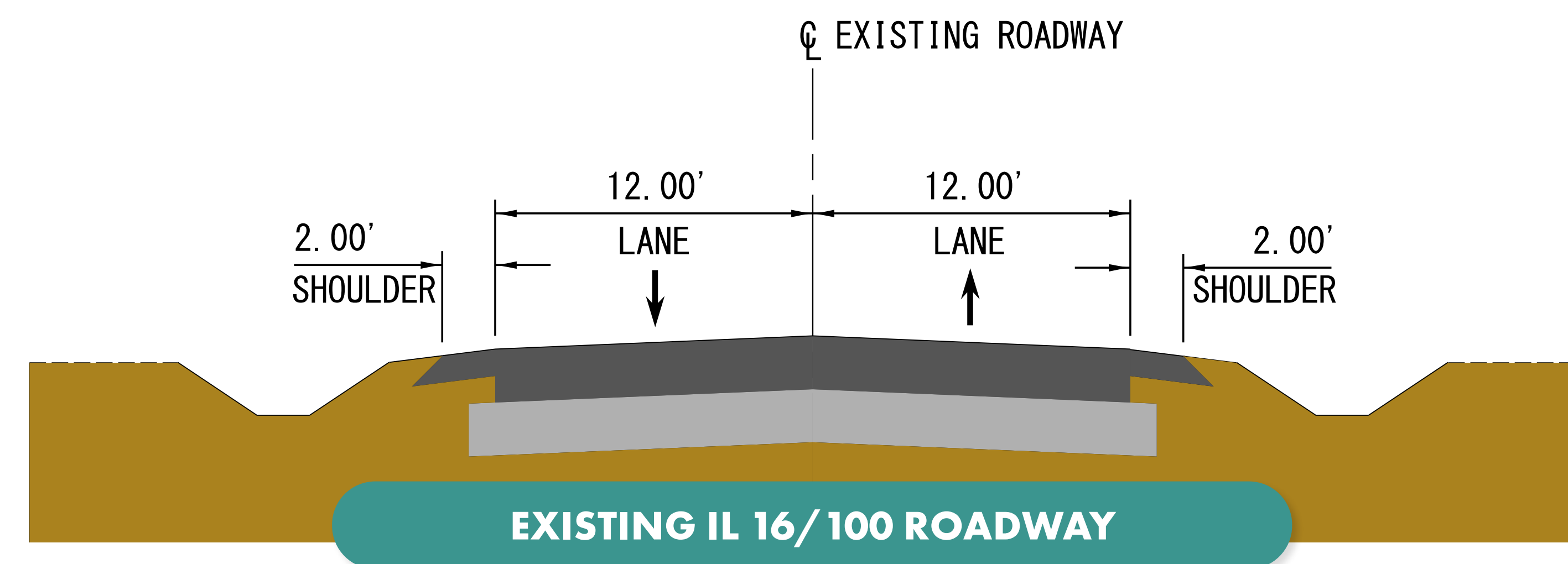
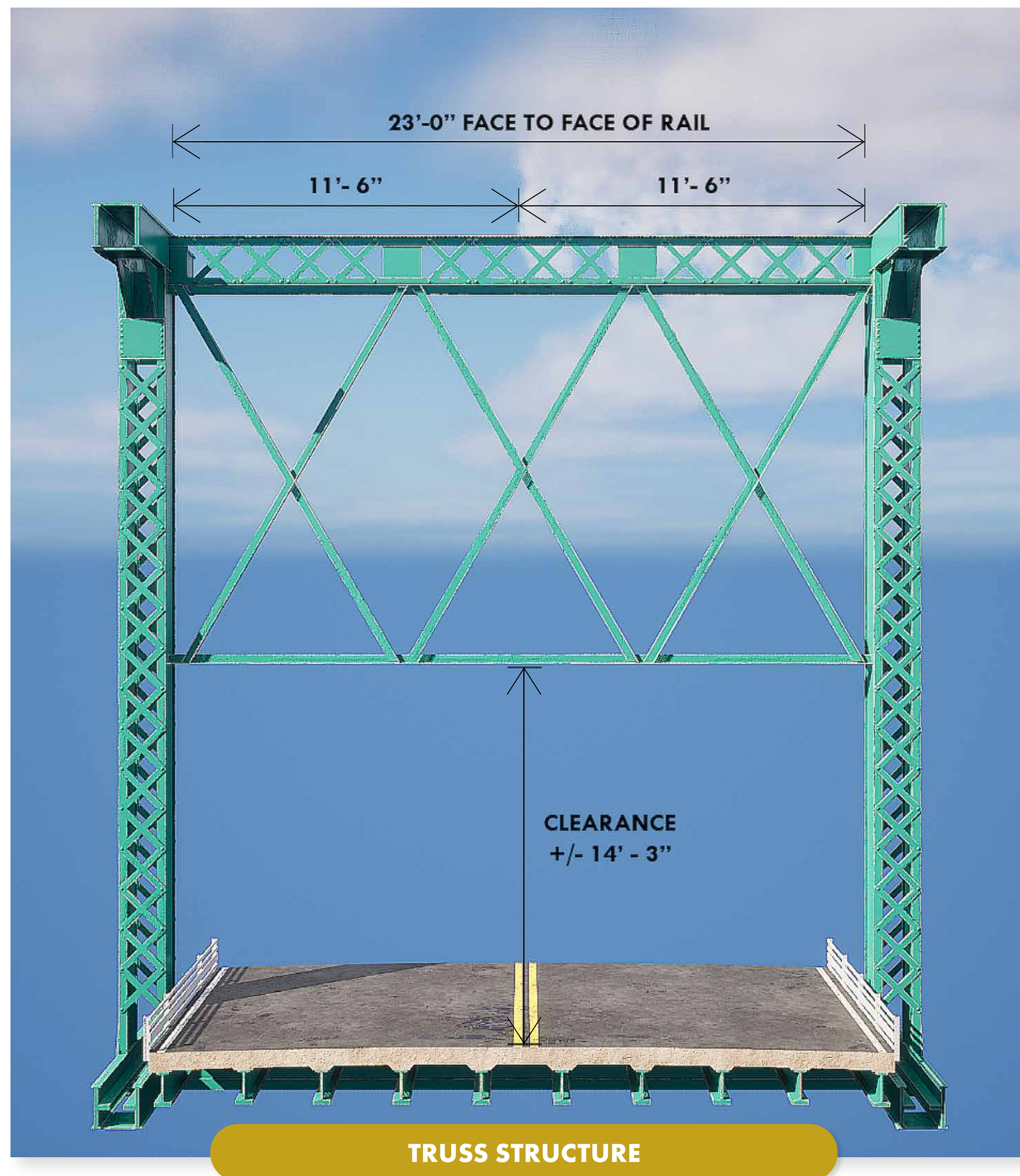


This elevation map helps show the height difference between the top of the bluff and the IL River. Normal Pool for the IL River is at elevation 419, indicated by the blue color on the map. Some bluff locations near the existing Joe Page Bridge have an approximate elevation of 720, indicated by the grayish brown color on the map. This component must be considered as a location for the new bridge is evaluated.



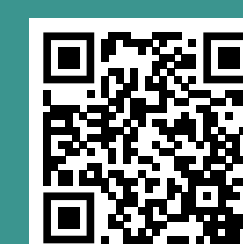


# Existing Cross Sections



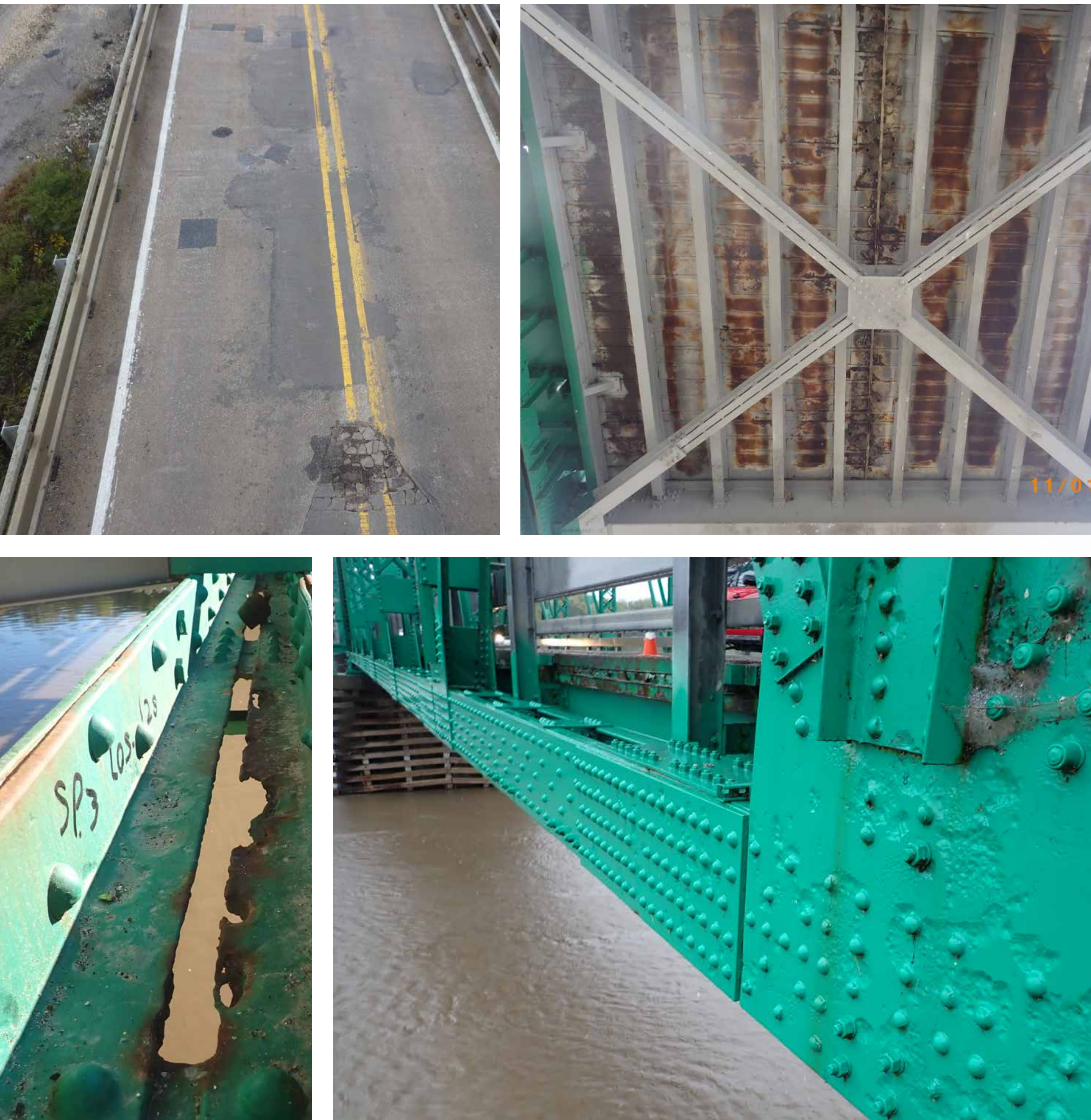
## CURRENT DESIGN POLICY FOR A BRIDGE REQUIRES

- ▶ 16'-6" vertical clearance
- ▶ 32' Bridge width (Minimum)
- ▶ 4' shoulder width (Minimum)
- ▶ Consideration of bike/pedestrian accommodations





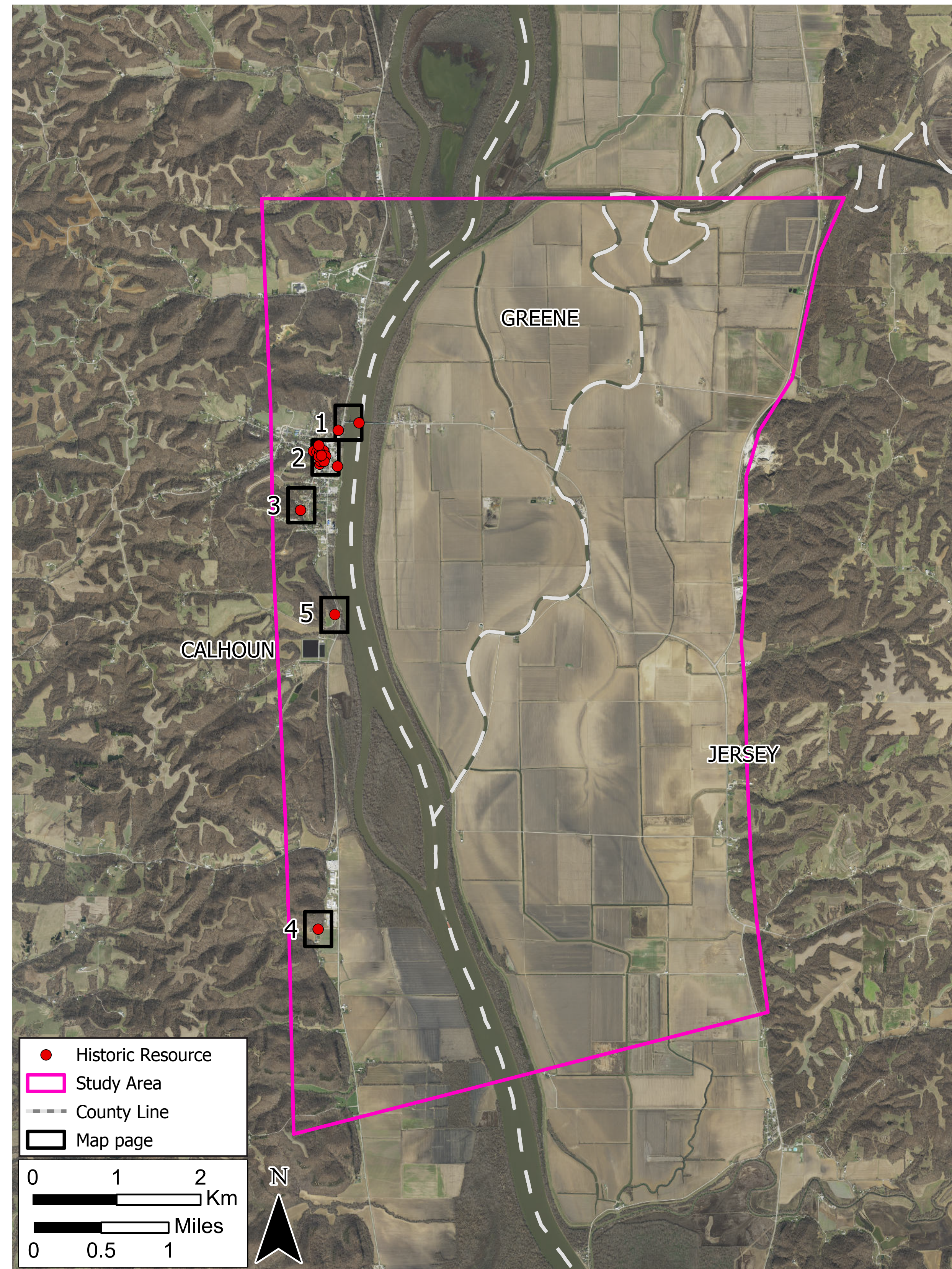
# *Bridge Deficiencies*



- Advanced superstructure deterioration
- Exposed rebar
- Isolated substructure cracking
- Non-policy design
- Narrow bridge width
- Narrow shoulders
- Vertical clearance limits agricultural vehicles
- Mechanical bridge can get stuck
- Lift span operation delays traffic and emergency responders
- Trouble securing replacement parts

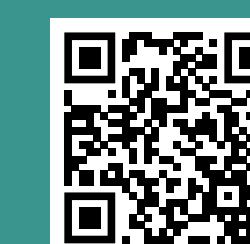


# Potential Historic Resources



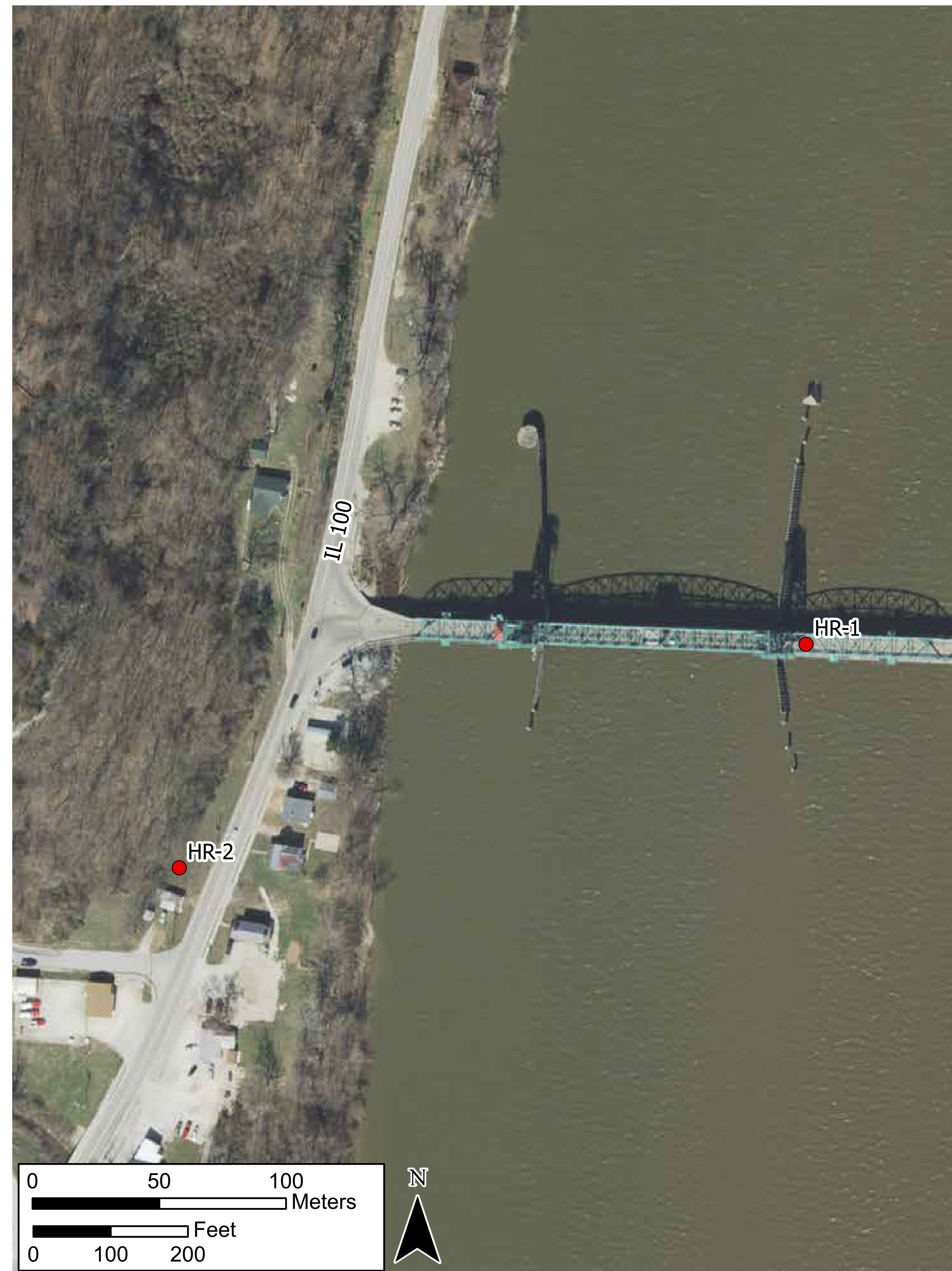
Box #	Historic Resource #	Name/Description
1	HR-1	Joe Page Memorial Bridge (eligible for National Register)
	HR-2	French Cemetery
2	HR-3	Dwelling, I-House
	HR-4	St. Norbert Roman Catholic Church
	HR-5	First Presbyterian Church
	HR-6	Hunt's Variety, Calhouns Variety
	HR-7	Old Calhoun County Jail & Sheriff's Office
	HR-8	Calhoun County Courthouse
	HR-9	Commercial
	HR-10	Perry House Hotel
	HR-11	Dwelling, Gable and Wing
	HR-12	Dwelling
	HR-13	Dwelling
3	HR-14	Dwelling
	HR-15	Dwelling, Queen Ann
4	HR-16	Dwelling, Queen Ann
5	HR-17	Captain Thomas Mortland House
5	HR-18	Rocky Bar Farm Home*

\* Potential resource received from public input



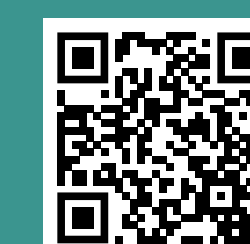


# Potential Historic Resources



Box #	Historic Resource #	Name/Description
<b>1</b>	<b>HR-1</b>	Joe Page Memorial Bridge (eligible for National Register)
	<b>HR-2</b>	French Cemetery
<b>2</b>	<b>HR-3</b>	Dwelling, I-House
	<b>HR-4</b>	St. Norbert Roman Catholic Church
	<b>HR-5</b>	First Presbyterian Church
	<b>HR-6</b>	Hunt's Variety, Calhouns Variety
	<b>HR-7</b>	Old Calhoun County Jail & Sheriff's Office
	<b>HR-8</b>	Calhoun County Courthouse
	<b>HR-9</b>	Commercial
	<b>HR-10</b>	Perry House Hotel
	<b>HR-11</b>	Dwelling, Gable and Wing
	<b>HR-12</b>	Dwelling
	<b>HR-13</b>	Dwelling
	<b>HR-14</b>	Dwelling
	<b>HR-15</b>	Dwelling, Queen Ann
<b>3</b>	<b>HR-16</b>	Dwelling, Queen Ann
<b>4</b>	<b>HR-17</b>	Captain Thomas Mortland House
<b>5</b>	<b>HR-18</b>	Rocky Bar Farm Home*

\*Potential resource received from public input



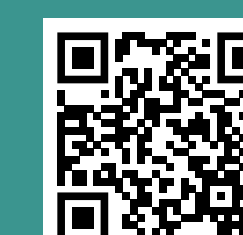


# Potential Historic Resources



Box #	Historic Resource #	Name/Description
1	HR-1	Joe Page Memorial Bridge (eligible for National Register)
	HR-2	French Cemetery
2	HR-3	Dwelling, I-House
	HR-4	St. Norbert Roman Catholic Church
	HR-5	First Presbyterian Church
	HR-6	Hunt's Variety, Calhouns Variety
	HR-7	Old Calhoun County Jail & Sheriff's Office
	HR-8	Calhoun County Courthouse
	HR-9	Commercial
	HR-10	Perry House Hotel
	HR-11	Dwelling, Gable and Wing
	HR-12	Dwelling
	HR-13	Dwelling
	HR-14	Dwelling
	HR-15	Dwelling, Queen Ann
3	HR-16	Dwelling, Queen Ann
4	HR-17	Captain Thomas Mortland House
5	HR-18	Rocky Bar Farm Home*

\* Potential resource received from public input



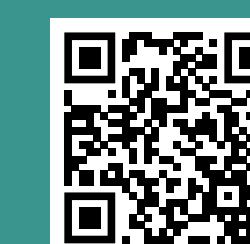


# Potential Historic Resources



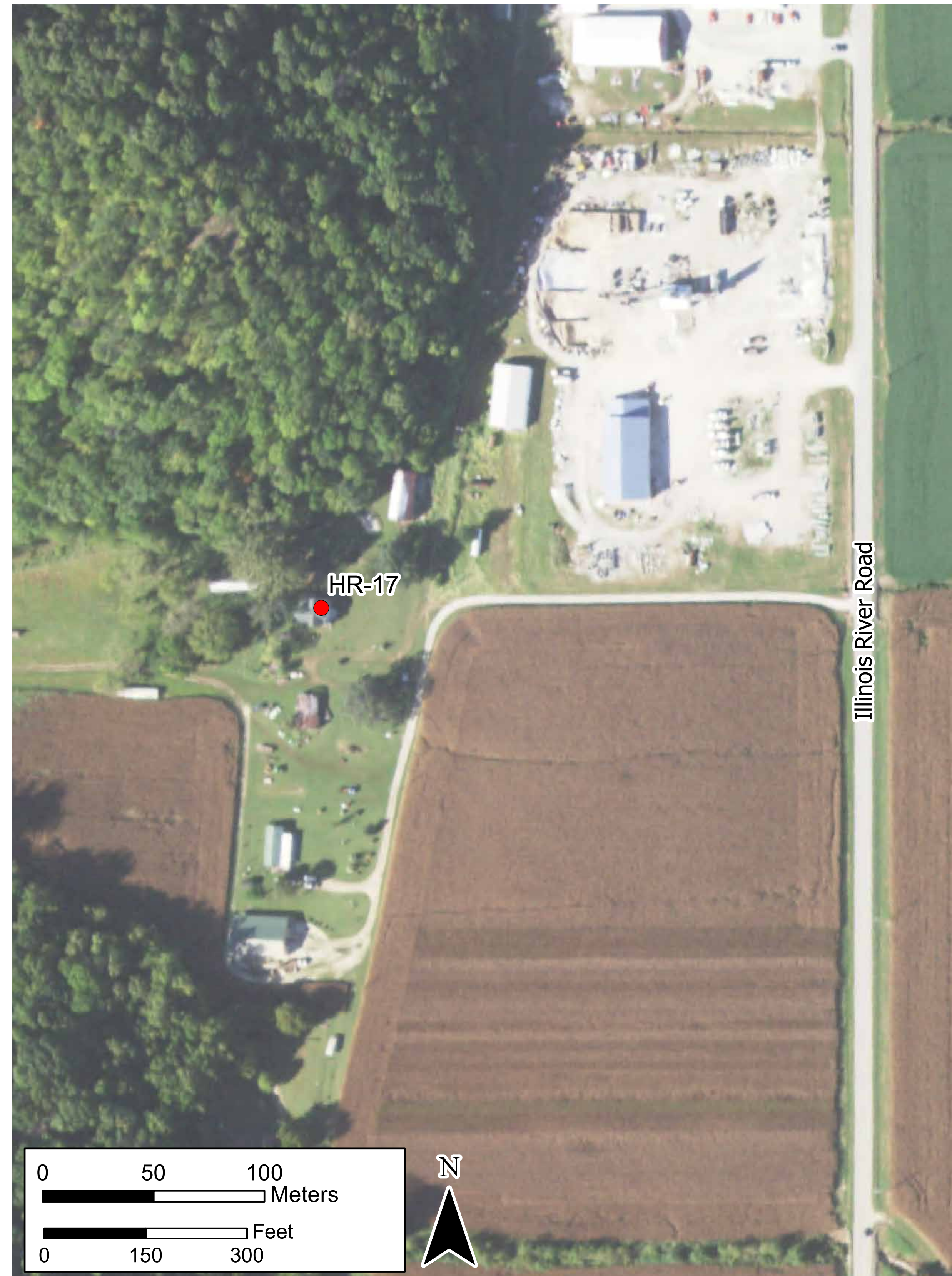
Box #	Historic Resource #	Name/Description
<b>1</b>	<b>HR-1</b>	Joe Page Memorial Bridge (eligible for National Register)
	<b>HR-2</b>	French Cemetery
<b>2</b>	<b>HR-3</b>	Dwelling, I-House
	<b>HR-4</b>	St. Norbert Roman Catholic Church
	<b>HR-5</b>	First Presbyterian Church
	<b>HR-6</b>	Hunt's Variety, Calhouns Variety
	<b>HR-7</b>	Old Calhoun County Jail & Sheriff's Office
	<b>HR-8</b>	Calhoun County Courthouse
	<b>HR-9</b>	Commercial
	<b>HR-10</b>	Perry House Hotel
	<b>HR-11</b>	Dwelling, Gable and Wing
	<b>HR-12</b>	Dwelling
	<b>HR-13</b>	Dwelling
	<b>HR-14</b>	Dwelling
	<b>HR-15</b>	Dwelling, Queen Ann
<b>3</b>	<b>HR-16</b>	Dwelling, Queen Ann
<b>4</b>	<b>HR-17</b>	Captain Thomas Mortland House
<b>5</b>	<b>HR-18</b>	Rocky Bar Farm Home*

\*Potential resource received from public input



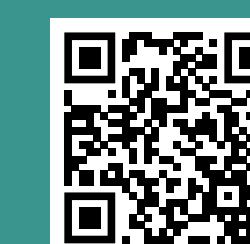


# Potential Historic Resources



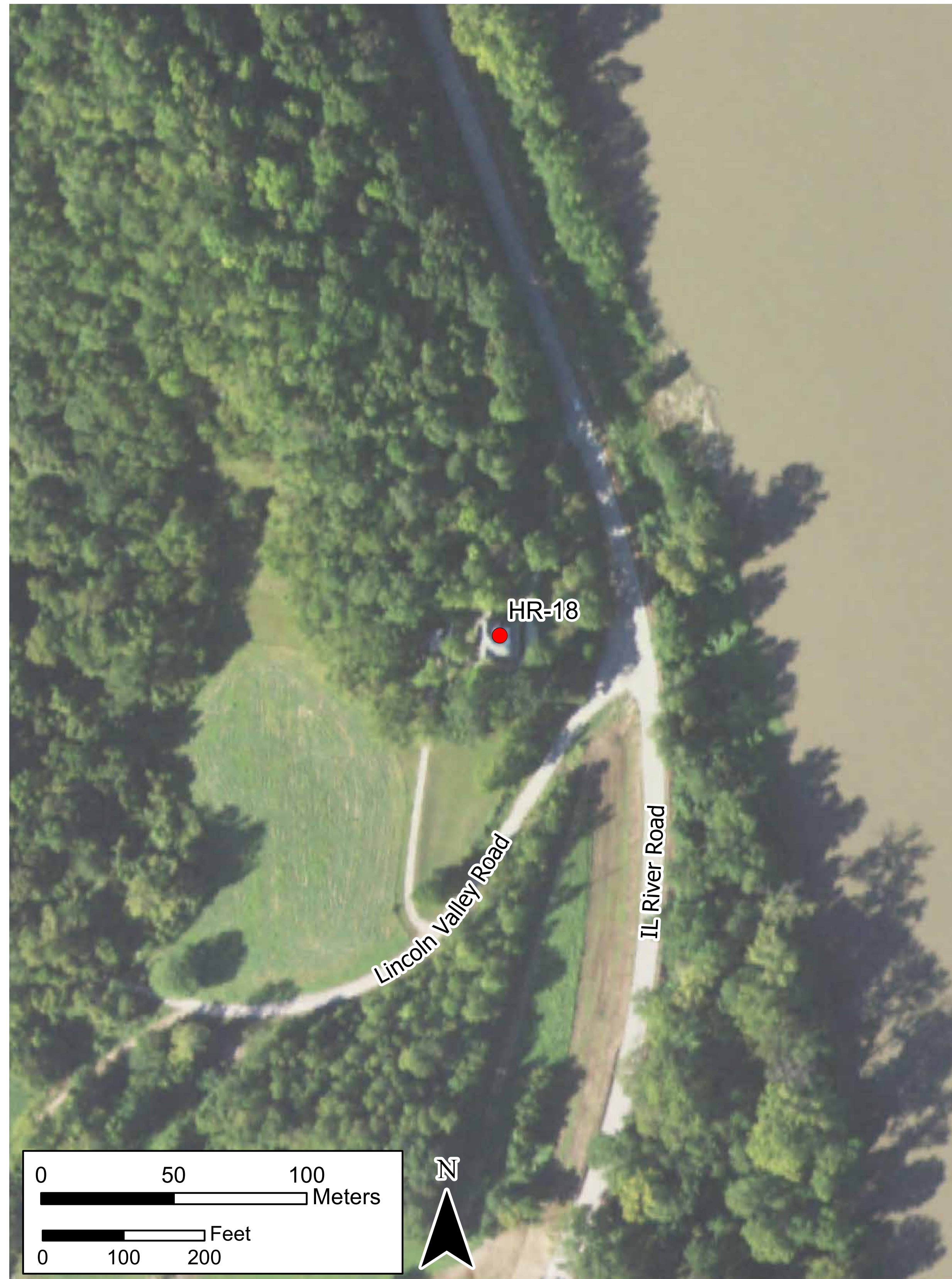
Box #	Historic Resource #	Name/Description
1	HR-1	Joe Page Memorial Bridge (eligible for National Register)
	HR-2	French Cemetery
2	HR-3	Dwelling, I-House
	HR-4	St. Norbert Roman Catholic Church
	HR-5	First Presbyterian Church
	HR-6	Hunt's Variety, Calhouns Variety
	HR-7	Old Calhoun County Jail & Sheriff's Office
	HR-8	Calhoun County Courthouse
	HR-9	Commercial
	HR-10	Perry House Hotel
	HR-11	Dwelling, Gable and Wing
	HR-12	Dwelling
	HR-13	Dwelling
	HR-14	Dwelling
	HR-15	Dwelling, Queen Ann
3	HR-16	Dwelling, Queen Ann
4	HR-17	Captain Thomas Mortland House
5	HR-18	Rocky Bar Farm Home*

\*Potential resource received from public input





# Potential Historic Resources



Box #	Historic Resource #	Name/Description
<b>1</b>	<b>HR-1</b>	Joe Page Memorial Bridge (eligible for National Register)
	<b>HR-2</b>	French Cemetery
<b>2</b>	<b>HR-3</b>	Dwelling, I-House
	<b>HR-4</b>	St. Norbert Roman Catholic Church
	<b>HR-5</b>	First Presbyterian Church
	<b>HR-6</b>	Hunt's Variety, Calhouns Variety
	<b>HR-7</b>	Old Calhoun County Jail & Sheriff's Office
	<b>HR-8</b>	Calhoun County Courthouse
	<b>HR-9</b>	Commercial
	<b>HR-10</b>	Perry House Hotel
	<b>HR-11</b>	Dwelling, Gable and Wing
	<b>HR-12</b>	Dwelling
	<b>HR-13</b>	Dwelling
	<b>HR-14</b>	Dwelling
	<b>HR-15</b>	Dwelling, Queen Ann
<b>3</b>	<b>HR-16</b>	Dwelling, Queen Ann
<b>4</b>	<b>HR-17</b>	Captain Thomas Mortland House
<b>5</b>	<b>HR-18</b>	Rocky Bar Farm Home*

\*Potential resource received from public input

