



The Phase I Study of the Joe Page Bridge is progressing as planned. The Community Advisory Group (CAG) was formed and has met twice to provide input and local knowledge. At the first CAG meeting, the Problem Statement was developed. **A Problem Statement is a concise description of the problem or issue a project seeks to address.** This statement was then used to develop the Purpose and Need, a federally required document that explains the intent of the project and why a solution is necessary. The Purpose and Need for the Joe Page Bridge has received federal approval.

CAG members also completed a context audit form. This provides local information or context of the community. Comments included providing reliable access, protecting the natural environment, and coordination with local plans. At the second meeting, the CAG provided comments on the development of the corridors being presented on page 3.

The Study is now entering the Alternatives Development process. This starts by looking at wide corridors, as a first look at potential locations to replace the Joe Page Bridge. These corridors are evaluated and narrowed down. This screening process happens several times until a preferred alternative is recommended as shown in the graphic below.

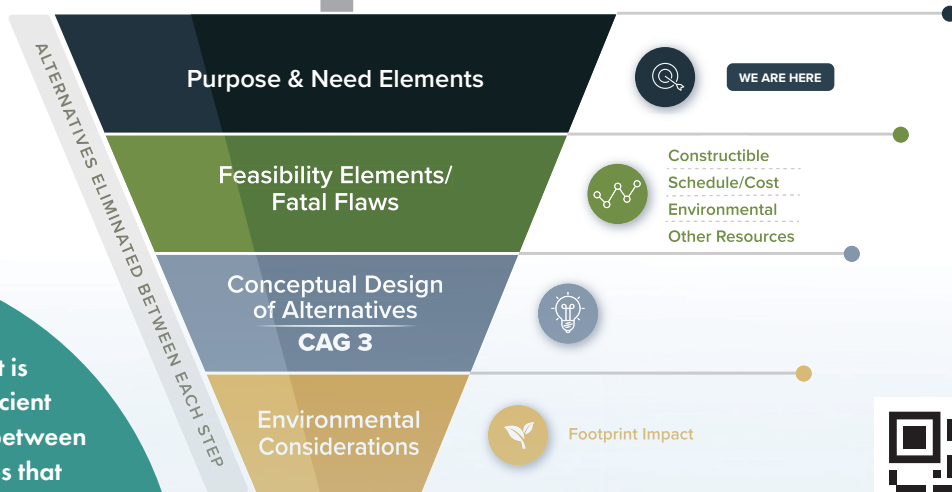
PROBLEM STATEMENT

The Joe Page Bridge carrying IL Routes 16/100 over the Illinois River is nearing the end of its useful life and in need of continual repairs.

The lift span creates traffic delays and increases emergency response times and is increasingly difficult to maintain.

There is a need to provide a sustainable long-term solution that provides a reliable crossing for the continued movement of goods and services along IL Routes 16/100 while preserving the environmental, recreational and economic viability within the project area.

Alternatives Screening Process



The **PURPOSE** of the project is to provide a reliable and efficient crossing of the Illinois River between Calhoun and Greene counties that is structurally sound and meets current design standards.

The **NEED** is due to the bridge nearing the end of its expected service life.



Alternatives Development PROCESS

Alternatives need to meet the study goals, the purpose and need statement, avoid or minimize environmental impacts, comply with IDOT engineering policies and follow the environmental resource agency permitting requirements.

Corridor Development Considerations

Examples Include:

- ✓ Connectivity to transportation system
- ✓ Bluff on west side of river
- ✓ River flow
- ✓ Nutwood levee
- ✓ Park limits
- ✓ NWI wetlands
- ✓ Historic properties
- ✓ Public service
- ✓ Transmission lines

As the Alternatives are developed, stakeholder input is considered. Stakeholders include the environmental resource agencies, local agencies, project partners, the CAG members, and the public. The CAG comments are gathered through the meetings and anyone can comment at public meetings or through the on-line comment form on the project website.

FY 2021 IDOT PROGRAM

Phase I Study = \$9 million

FY 24-29 MULTI-YEAR PROGRAM

Bridge Construction - \$225 million

Overall Project Development Process

We Are Here



PHASE I

36 - 48 MONTHS

Preliminary Engineering and Environmental Studies



PHASE II

24 - 36 MONTHS

Contract Plan Preparation & Land Acquisition

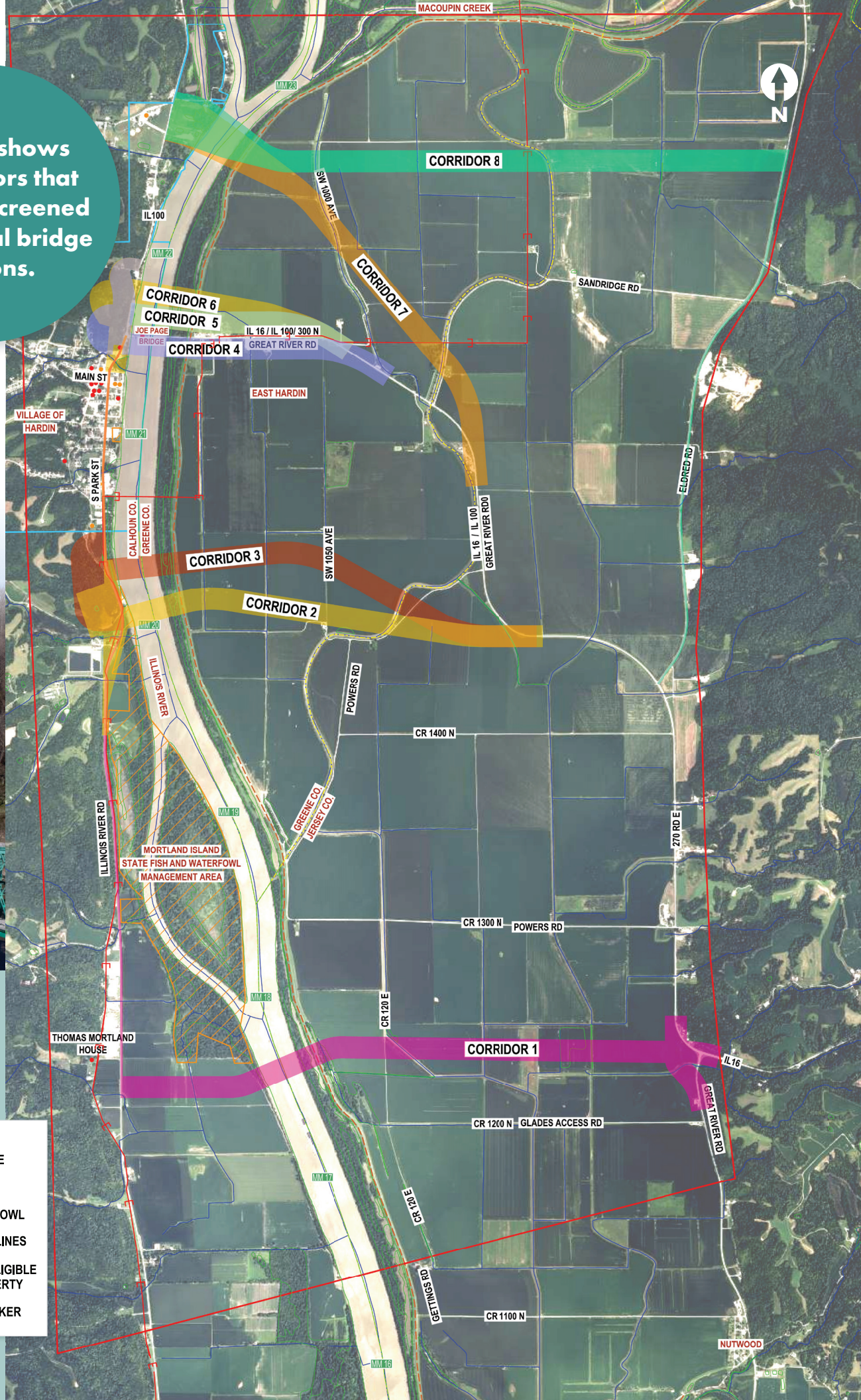


PHASE III

+/- 36 MONTHS

Construction

This map shows the corridors that are being screened for potential bridge locations.



- LEGEND**
- NUTWOOD LEVEE
 - COUNTY LINE
 - ESR LIMITS
 - CITY LIMITS
 - PARK & WATERFOWL AREA LIMITS
 - TRANSMISSION LINES
 - NWI WETLAND
 - POTENTIALLY ELIGIBLE HISTORIC PROPERTY
 - PUBLIC SERVICE
 - RIVER MILE MARKER

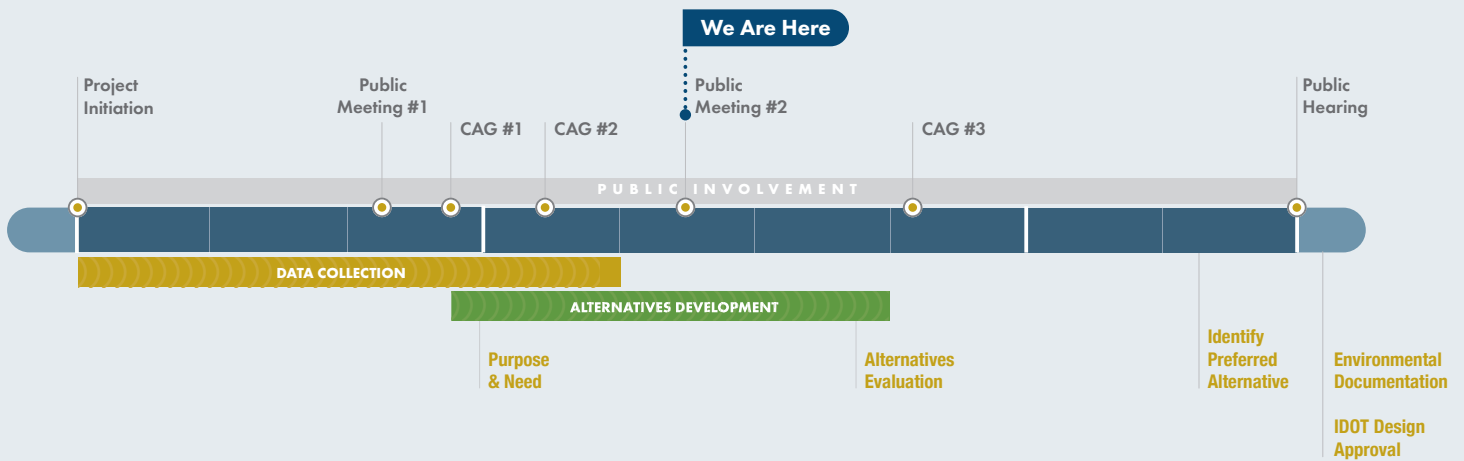
Public Involvement Opportunities

IDOT is following the Context Sensitive Solutions (CSS) process for this study. CSS is a collaborative approach where feedback is gathered and used to develop a transportation solution. Public involvement is a key component of this process. Here are some ways you can participate and stay up to date on project milestones:






- ▶ Attend Public Meetings
- ▶ Read Newsletters
- ▶ Submit Comments
- ▶ Visit the Project Website www.JoePageBridge.com

PHASE I PROJECT TIMELINE



Your Feedback is WELCOMED!

Your input is valuable, and it is our commitment to include stakeholders in this process. Provide comments in one of the following ways:

-  Submit comments through the project website www.JoePageBridge.com
-  Mail your comments directly to IDOT
Illinois Department of Transportation – District 8
c/o Sarah Wiszkon, P.E., Project Studies Engineer
1102 Eastport Plaza Drive
Collinsville, IL 62234
-  Email us at: Sarah.Wiszkon@illinois.gov

What Are the Next Steps?

Over the next several months, the team will screen the corridors to refined alternatives. These will be presented at the third meeting of the Community Advisory Group, followed by the next public meeting.